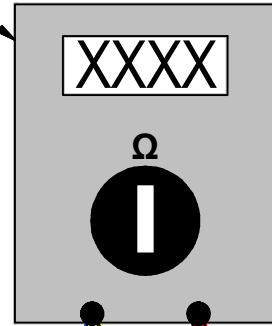


# CIRCUIT TEST FOR CATHODE AND CABLE

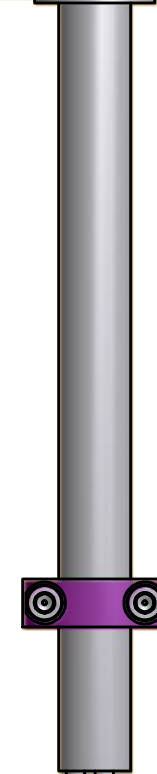
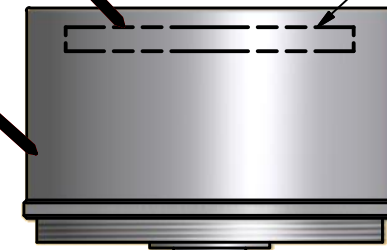
MULTI METER



INSTRUMENT TEST LEADS

TARGET

ANODE



CENTER PIN

POWER CONNECTOR

1. TARGET to CENTER PIN ON CONNECTOR = CLOSED  
( GREEN AND BLUE )

2. TARGET to OUTSIDE OF CONNECTOR = OPEN  
( GREEN AND YELLOW ) GREATER THAN 100K OHM  
WHEN FLOWING WATER

3. ANODE to OUTSIDE OF CONNECTOR = CLOSED  
( RED AND YELLOW )

NO.	DATE	REVISION	BY

TOLERANCES  
(UNLESS OTHERWISE SPECIFIED)

LINEAR (IN.) FRACTIONAL = ± 1/64	LINEAR (MM) NO DECIMAL = ±0.5
2 PLACE DECIMAL = ±0.01	1 PLACE DECIMAL = ±0.1
3 PLACE DECIMAL = ±0.005	2 PLACE DECIMAL = ±0.01
4 PLACE DECIMAL = ±0.0005	

ANGULAR  
DEGREES = ±1°  
DEGS, MINS = ±00°,30'  
DEGS, MINS, SECS = ±00°,00',30"

## CONFIDENTIAL

NOTICE: THE INFORMATION CONTAINED HEREIN IS PROPERTY OF ANGSTROM SCIENCES, INC. DUQUESNE, PA AND CONTAINS PROPRIETARY INFORMATION WHICH HAS BEEN SUBMITTED TO YOU IN CONFIDENCE FOR A SPECIFIC PURPOSE. COPYING, USING, OR DISCLOSING THIS DRAWING OR THE INFORMATION ON IT WITHOUT ANGSTROM SCIENCES PRIOR WRITTEN CONSENT BY AN APPROVED REPRESENTATIVE IS PROHIBITED AND MAY BE GROUNDS FOR LEGAL ACTION. PATENTABLE DESIGN FEATURES ARE PROTECTED BY UNITED STATES PATENT LAWS.

SCALE:	NTS	
DRAWN BY:	jmaline	DATE: 12/22/2015
CHKD. BY:		DATE:
APVL. BY:		DATE:
SHEET 1 OF 1		
PART NO.:		

ANGSTROM SCIENCES, INC.	
TITLE: CATHODE POWER SHORT CIRCUIT TEST	
DRAWING NUMBER:	REV. SIZE
SHORT CIRCUIT TEST	0 B