

ONYX® 2" Ultra High Vacuum, IC Target, Standard Magnetics

US Specifications

Construction

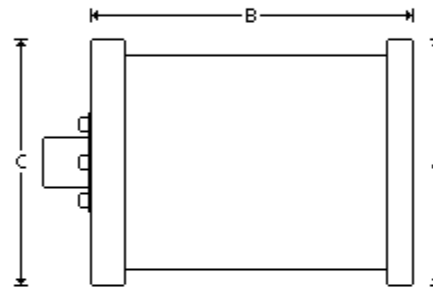
Anode	304 Stainless Steel
Cathode Body	OFHC Copper
Insulator	Aluminum Oxide (Al ₂ O ₃)

Cooling Requirements

Flow Rate at Maximum Power	0.75 GPM
Maximum Input Pressure, Open Drain	60 psi
Maximum Input Temperature	68 °F

Dimensions

A	4.470"
B	6.380"
C	4.875"



General

Magnetic Enhancement	Permanent (NdFeB) Encapsulated
Maximum Temperature, Magnets Demounted	842 °F
Maximum Temperature, Magnets Mounted	212 °F
Source to Substrate Distance	2.000" - 12.000"
Weight, Approximate Without Options	11 lb

Maximum Sputtering Power *

Cathode Voltage	100 - 1500 Volts
Discharge Current	0.1 - 1.5 Amp
Indirect Cooled Mode, DC	800 Watts
Indirect Cooled Mode, RF	300 Watts
Operating Pressure	1 - 50 mTorr

Mounting, Standard

CF Flange	4.470"
Power Connector, DC	Type N Connector, External Threads
Power Connector, RF	Type N Connector, External Threads
Water, Outer Dimension Tubing	0.250"

Target

Cooling	Indirect
Diameter	2.000"
Form	Circular / Planar
Thickness	0.125"

Specifications Disclaimer

- All Angstrom Sciences NdFeB magnets are totally encapsulated and protected from degradation by water.
 - All sources are available in external configurations.
 - * Maximum power for cathode only, a target material's properties, such as, thermal and electrical conductivity may limit the maximum process power level.
 - Some custom-engineered and specialty magnetrons may not meet standard specifications.
 - Specifications are subject to change without notice.
 - Typical performance. Results may vary with process parameters such as pressure, flow rate, target material, and substrate rotation, etc.
-

Please contact us for specifications regarding your application.

Angstrom Sciences | Call +1-412-469-8466 | www.angstromsciences.com